

40 Watt CTH-YAG SOLID-STATE RESONATOR

New Source Technology is pleased to offer its newest product - off-the-shelf laser resonator assemblies. These resonators are intended for OEM's or R&D applications. Laser assemblies include: pump chamber, flashlamp, laser rod,

trigger electronics, and resonator optics tailored for the specific application. Also available are resonator assemblies using other solid-state laser media, such as Er:YAG, Er:Glass, Nd:YAG, Nd:Glass, Ruby, and Alexandrite. New Source Technology also offers custom resonators with average powers up to 40 W (2080nm) and 200W @ (1064nm) as well as turnkey systems.

Features:

Compact Size

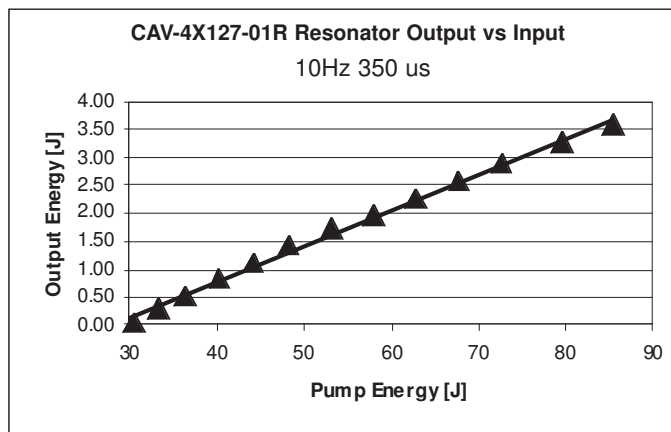
**Room Temperature
 Water-Cooled**

Flashlamp Pumped

**Average Power to 40
 Watts**

**Available with
 Ho:YAG, Ruby,
 Nd:YAG, Nd:Glass,
 Er:YAG, Er:Glass or
 Alexandrite rods**

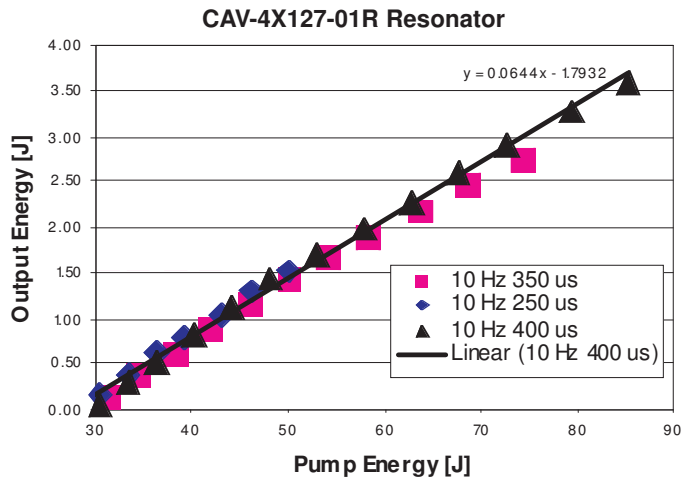
**OEM or R&D
 Applications**



Specifications

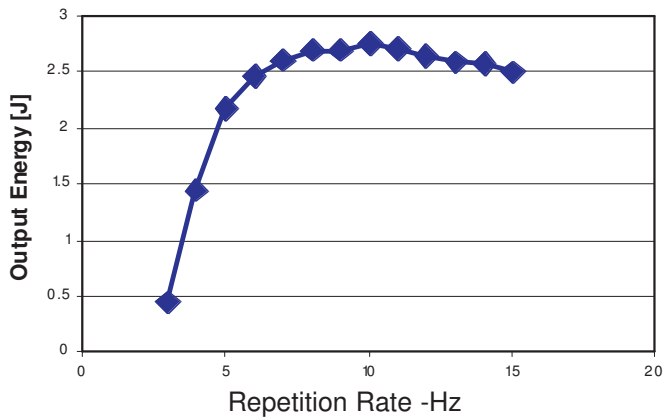
Parameter	Nominal Value
Wavelength:	2080 nm
Pulse Energy:	3 J
Pulse Width:	350 us
Average Power:	40 W
Laser Head Dim:	9 X 10 X 30 cm
Slope Efficiency:	5.1%
Coolant Temp.:	25°C

CAV-4X127-01R Resonator



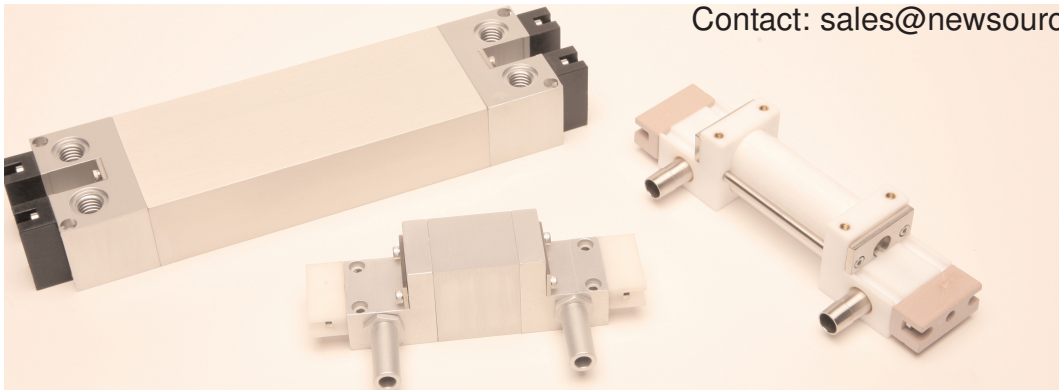
Ho:YAG Rod (Standard Doping)
25°C Coolant
6.0 l/min Flow
Variable pulse width
Variable pump energy

CAV-4X127-01R Output Energy vs Repetition Rate
Pump Energy set at 65J



Ho:YAG Rod (Standard Doping)
25°C Coolant
350 us Pump Pulse
65 J Pump Energy
6.0 l/min Flow
Variable repetition rate

We also have a complete line of laser cavities.
Contact: sales@newsourcetechnology.com



1249 Quarry Lane, Suite 100 Pleasanton, CA 94566 USA
Tel: (925) 462-6888, Fax:(925) 462-8388
www.newsourcetechnology.com